

eXchange "X" series

X3t

Dual-platform tube and sheet fiber laser cutting machine



Two functions in one machine

This is the high cost-effective laser equipment, which meets both plate and pipe cutting functions.

The fully enclosed design avoids laser radiation or mechanical movement damage and improves personal safety protection.

Technical Parameters

Processing format: 1500mm*3000mm

Tube processing length: 6000mm

Tube diameter range: Round: Ø20-160mm

Square: 20*20-110*110mm

Laser power: 1500W~6000W

Positioning accuracy: 0.05mm

Repositioning accuracy: 0.03mm

Maximum positioning speed: 60m/min

Maximum acceleration: 1.0g

Industry Application

Applicable to the industries of automotive parts, metal sanitary ware, hardware, stainless steel daily necessities, children's pushcarts, etc.



Equipment Features

- The "X3t" series of eXchange combines efficient processing of metal plates with high-quality cutting of various types of tubing, enabling dual use of one machine.

- The space-saving design is easy to install.

- The enclosed design makes tube sheet cutting safer.

Simple

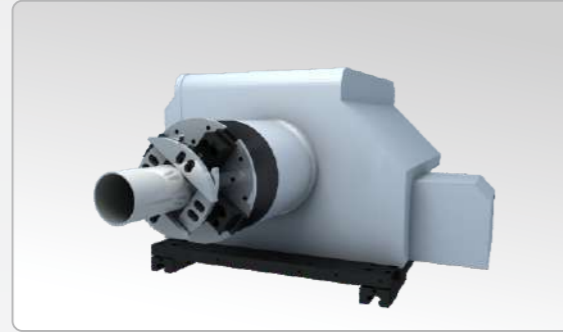


eXchange “X”series

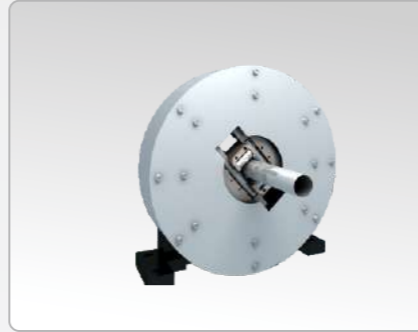
X3t

01

Full- stroke pneumatic chuck could achieve one key to complete pipe clamping and self- centering, without manual adjustment.

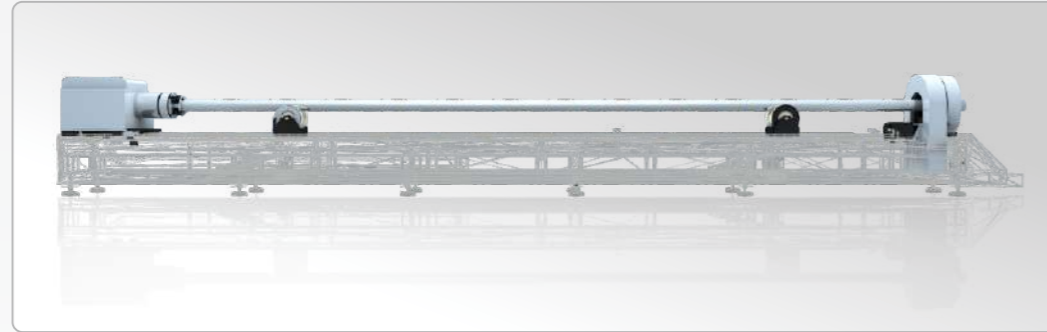


Main Features



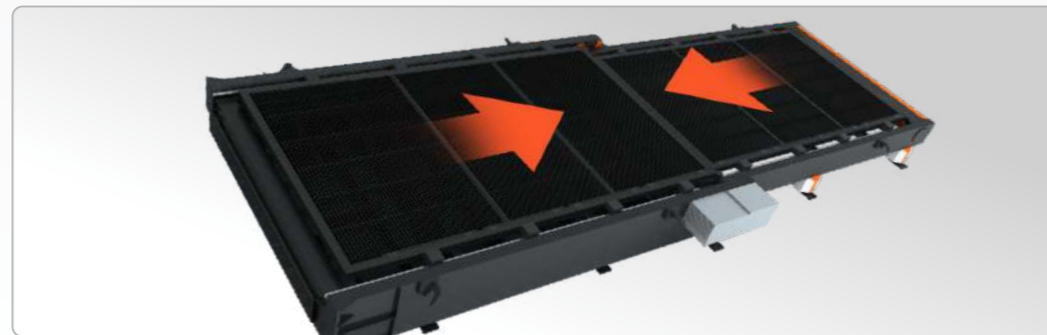
02

There are two variable diameter supporting wheels used to dynamically support the 6M long pipe and maintain the clamping level to ensure the cutting accuracy.



03

With high power driving motor , the working table can realize smooth and efficient exchange under the condition of heavy load, with high synchronization of interchange.



04

While taking into account the convenient loading and unloading of the tube sheet, the fully enclosed design is adopted to avoid laser radiation or mechanical movement damage and improve personal safety protection.

