

EcoFlex“F”Series

F12/F16/F20/F35/ F16A/F20A/F20A-3D

Start off fiber laser tube cutting machine

Low investment, high return

- ✔ large plate welding bed is stable and durable for more than ten years
- ✔ 1 machine > 3 sawing machines + 2 punching machines
- ✔ It's the best entry-level industry processing tool

Technical Parameters

Tube diameter range:

round: Ø10-120mm(F12)/Ø10-160mm(F16/F16A)

Ø10-220mm(F20/F20A/F20A-3D)/Ø50-350mm(F35)

square: 10*10-120*120mm(F12)

10*10-110*110mm(F16/F16A)

10*10-150*150mm(F20/F20A/F20A-3D)

50*50-240*240mm(F35)

Laser power: 1500W~6000W

Maximum rotational speed: 130r/min

Positioning accuracy: 0.05mm

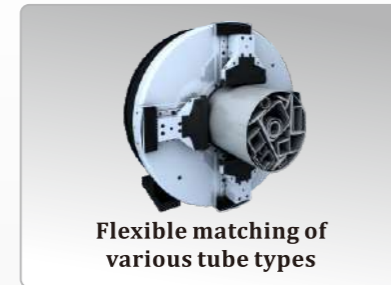
Repeat positioning accuracy: 0.03mm

Maximum positioning speed: 80m/min

Maximum acceleration: 1.0g



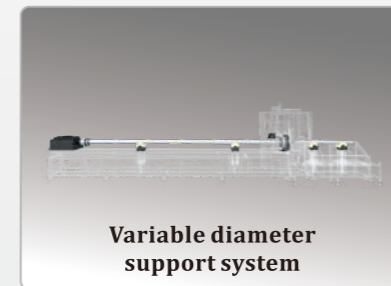
Main Features



Flexible matching of various tube types



Simple Loader(optional)



Variable diameter support system



User-friendly console

COMPANY PROFILE

Wuhan Golden Laser Co., Ltd. was established in 2005 and listed on the Shenzhen Stock Market in 2011. It is a digital technology commercial application solution provider.

Golden Laser has made significant growth in the fields of metal sheet cutting, tube cutting, and laser welding. The sheet cutting series include fully enclosed exchange table series, sheet and tube Combo series, open table cutting series, and precision small-format cutting series. The tube series include automatic tube cutting series and semi-automatic tube cutting series.

Golden Laser has a high impact globally, with its products exported to more than 120 countries and regions across five continents. The company has signed agency cooperation agreements with more than 50 countries and regions, including the United States, Germany, the United Kingdom, France, South Korea, India, Australia, South Africa, Taiwan, Hungary, Mexico, Colombia, Russia, Spain, and more.

Now, Golden Laser is becoming the vanguard of subverting traditional crafts with the strength of icebreaker. Golden Laser, always on the way!



WUHAN GOLDEN LASER CO., LTD

Golden Laser Industrial Park, Tianxing Rd, Hengdian Street, Chuanlong Avenue, Huangpi District, Wuhan, Hubei, China 430300

+86-27-61750109

www.goldenfiberlaser.com

info@goldenfiberlaser.com

FIBER LASER TUBE CUTTING MACHINES

Metal Fabrication Laser Solution Provider
Laser Tube | Sheet Metal | Automation | Laser Robot

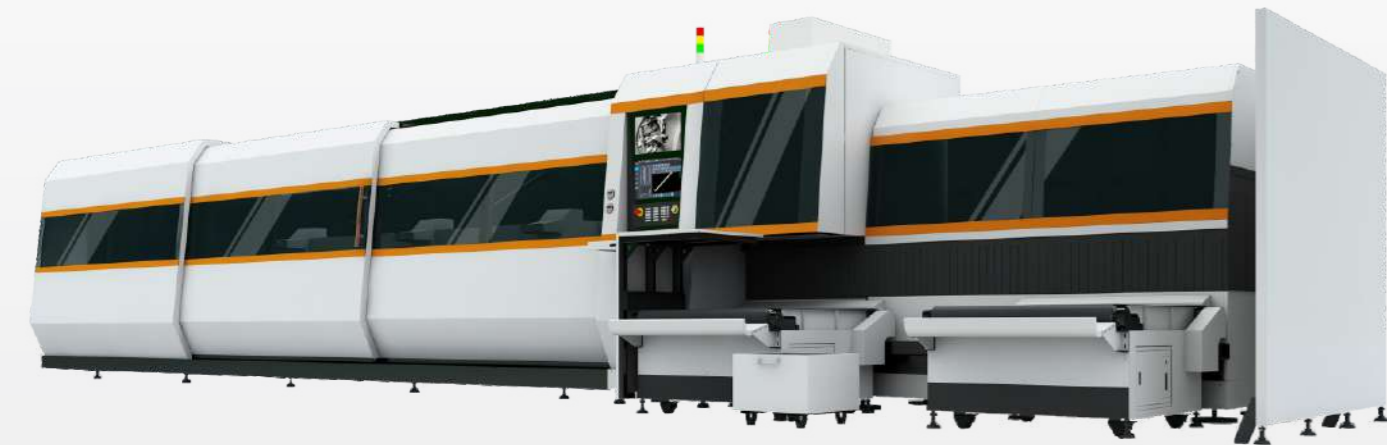


Intelligent “i” Series

i25-3D/i25A-3D

High-end CNC fiber laser tube cutting machine

Experience the unlimited possibilities of laser tube cutting



Reduce product costs with the advantages of laser processing

The laser's high-precision and high-speed cutting, combined with the oblique cutting of the swing head, provides unlimited possibilities for product processing. The Processing accuracy is extremely high, no subsequent processing is required, and the efficiency and quality are greatly improved.

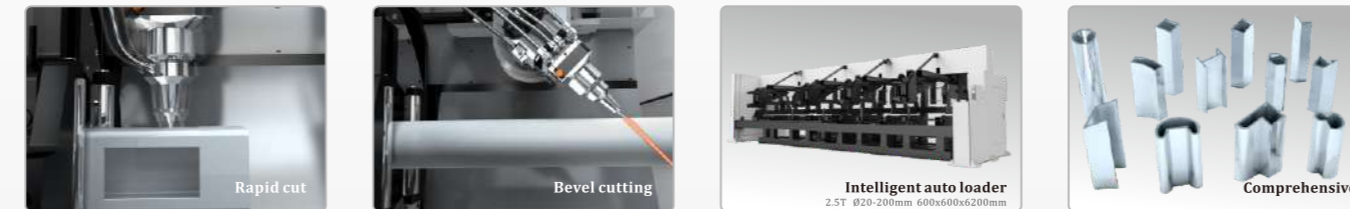
Technical Parameters

Tube diameter range range: round: \varnothing 20-250mm
square: 20*20-172*172mm

Maximum weight per single tube: 225kg(\varnothing 200mm*8mm*6000mm)
Laser power: 1500W~6000W
Bevelangle: max \pm 45°

Laser head: 3D-5axis head
Maximum rotational speed: 130r/min
Maximum positioning speed: 120m/min
Maximum acceleration: 1.2g

Main Features



i25/i35/i25A



Tube diameter range: round: \varnothing 20-250mm(i25)/ \varnothing 50-350mm(i35)
square: 20*20-172*172mm(i25)
50*50-240*240mm(i35)

Maximum weight per single tube: 225kg(\varnothing 200mm*8mm*6000mm)(i25)
Laser power: 1500W~6000W
Maximum rotational speed: 130r/min
Maximum positioning speed: 120m/min
Maximum acceleration: 1.2g

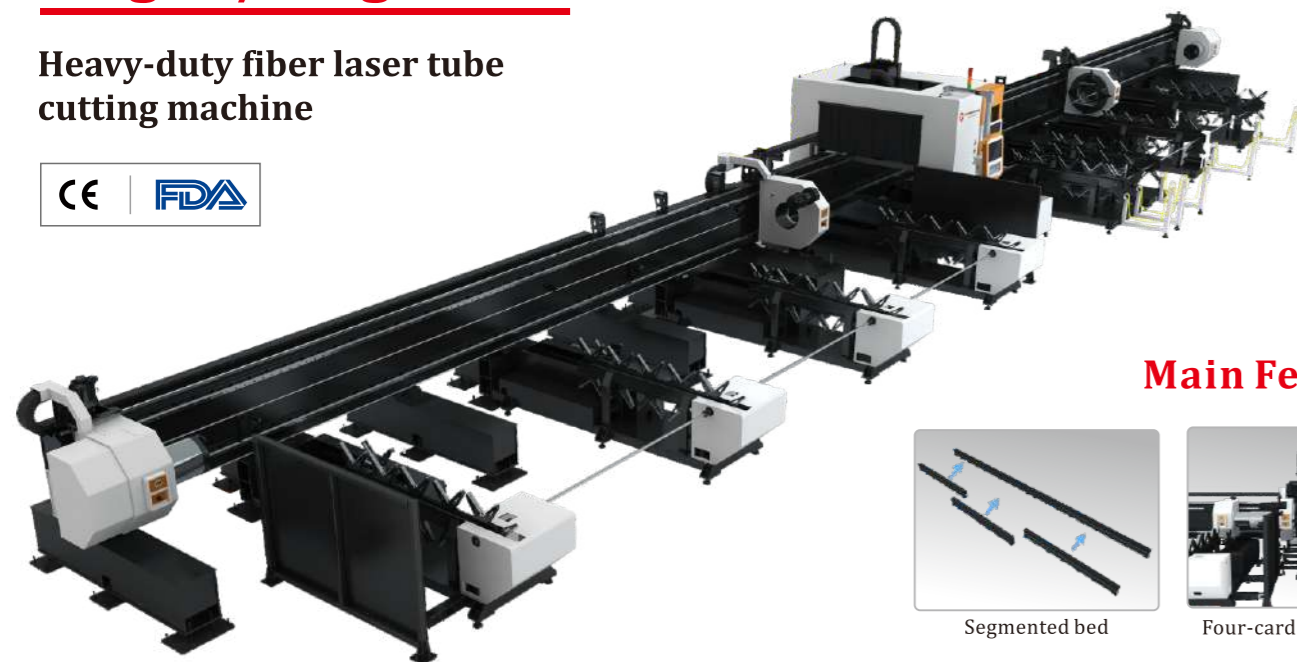
Mega Series

Mega4/Mega4-3D

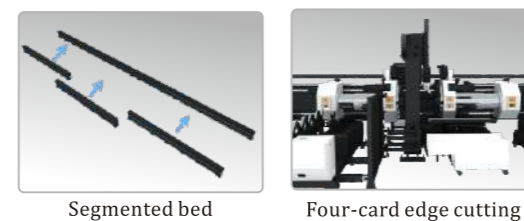
Heavy-duty fiber laser tube cutting machine



- ✓ Equipped with chain drive for loading and unloading
- ✓ Specially designed for the processing characteristics of heavy pipes
- ✓ The length of the processed pipe is up to 12m, 1200kg load



Main Features



Technical Parameters

Tube diameter range:
round: \varnothing 50-350mm/ \varnothing 50-450mm
square: 50*50-240*240mm/50*50-310*310mm
Length of feeding: 12000mm/9000mm
Cutting length: 12000mm/9000mm
Maximum weight per single tube : 1200kg(\varnothing 350mm*10mm*12000mm)
Laser power: 3000W~12000W

Tail length: 0
Load weight: MAX4.5T
Maximum rotational speed: 75r/min
Maximum positioning speed: 60m/min
Positioning accuracy: 0.1mm/10m
Maximum acceleration: 0.8g

Mega3/Mega3-3D



Tube diameter range: round: \varnothing 50-350mm/ \varnothing 50-450mm/ \varnothing 50-550mm
square: 50*50-240*240mm/50*50-310*310mm/
50*50-380*380mm

Length of feeding: 12000mm/9000mm/6000mm
Cutting length: 12000mm/9000mm/6000mm
Maximum weight per single tube: 1200kg(\varnothing 350mm*10mm*12000mm)
Laser power: 3000W~12000W
Maximum positioning speed: 60m/min
Positioning accuracy: 0.1mm/10m

Smart“S”Series

S12plus/S16plus

Tiny tube fiber laser cutting machine



Small size solves big problems

- ✓ Perfectly addresses processing of pipes with a diameter of up to 120mm/160mm.
- ✓ Innovative automatic feeding and sorting system for small pipes.
- ✓ Speed – always a step ahead.
- ✓ Precision – always surpassing expectations.

Technical Parameters

Tube diameter range:
round: \varnothing 20-120mm(S12plus)/ \varnothing 20-160mm(S16plus)
square: 20*20-80*80mm(S12plus)
20*20-110*110mm(S16plus)
Loading size: 800mm*800mm*6200mm
Laser power: 1500W~4000W

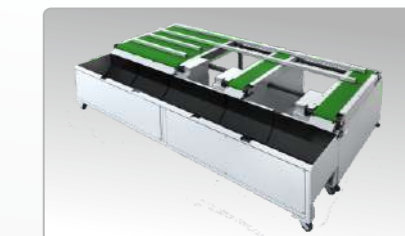
Maximum positioning speed: X axis 150m/min Y axis 120m/min
Maximum rotational speed: 150r/min
Positioning accuracy: 0.05mm
Repeat positioning accuracy: 0.03mm
Maximum acceleration: 1.5g

Main Features

Patented small tube loader



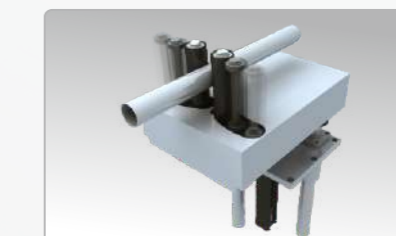
Conveyor collection



Small footprint



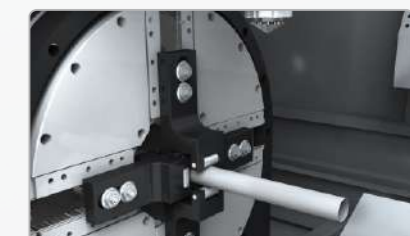
Auxiliary centering device



Full servo dynamic support



Double row of jaws



Smart“S”Series

S09/S12/S16

Tiny tube fiber laser cutting machine

Samples



Industry Application

Widely used in industries such as displays, furniture, medical equipment, automotive parts, kitchenware, outdoor products, and more.

Technical Parameters

Tube diameter range: round: $\varnothing 10-90\text{mm}$ (S09)/ $\varnothing 10-120\text{mm}$ (S12)/ $\varnothing 10-160\text{mm}$ (S16)
square: $10*10-90*90\text{mm}$ (S09)/ $10*10-120*120\text{mm}$ (S12)/ $10*10-160*160\text{mm}$ (S16)

Laser power: 1500W~3000W

Maximum positioning speed:X axis100m/min

Maximum rotational speed:150r/min

Positioning accuracy:0.05mm

Repeat positioning accuracy:0.03mm

Maximum acceleration:1.5g



Smart“S”Series

S12R

Round tube fiber laser cutting machine



Technical Parameters

Tube diameter range: round: \varnothing 20-120mm

Laser power: 1500W~3000W

Maximum positioning speed: 50m/min

Maximum rotational speed: 100r/min

Positioning accuracy: 0.05mm

Repeat positioning accuracy: 0.03mm

Maximum acceleration: 0.8g

