

Intelligent “i” Series

i25/i35/i25A

High-end CNC fiber laser tube cutting machine



The leader of new generation laser tube

- ✓ Equipped with new multi- touch CNC controller
- ✓ 4200mm-6000mm unrestricted mixed row automatic intelligent processing
- ✓ Seamlessly docked with the intelligent manufacturing factory
- ✓ MES cloud data management system
- ✓ It is the seventh generation flagship
- ✓ It is an ingenious product made after eight years of intensive development

Technical Parameters

Tube diameter range: round: $\varnothing 20-250\text{mm}$ (i25)/ $\varnothing 50-350\text{mm}$ (i35)
square: $20*20-172*172\text{mm}$ (i25)/
 $50*50-240*240\text{mm}$ (i35)
Maximum weight per single tube: 225kg ($\varnothing 200\text{mm}*8\text{mm}*6000\text{mm}$) (i25)

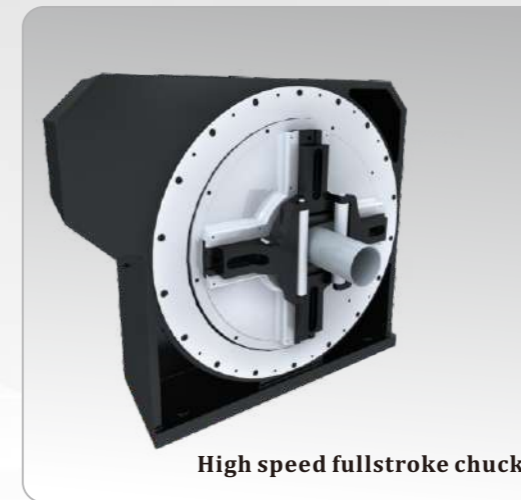
Laser power: $1500\text{W}\sim 6000\text{W}$
Maximum rotational speed: $130\text{r}/\text{min}$
Maximum positioning speed: $120\text{m}/\text{min}$
Maximum acceleration: 1.2g

Machine Details

07 08



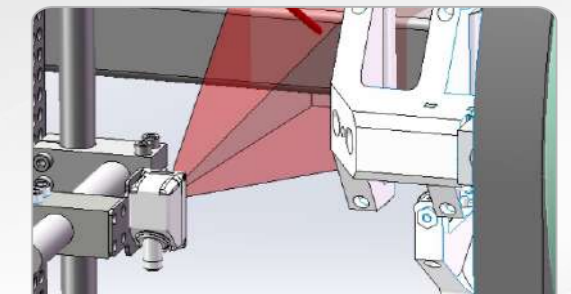
Intelligent human-computer interaction
New touch experience



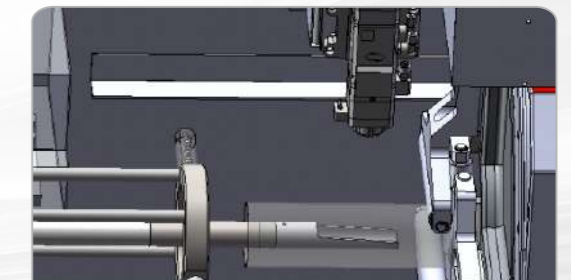
High speed fullstroke chuck

f3.lantek flex3d

Spanish nesting software
Born specifically for tube



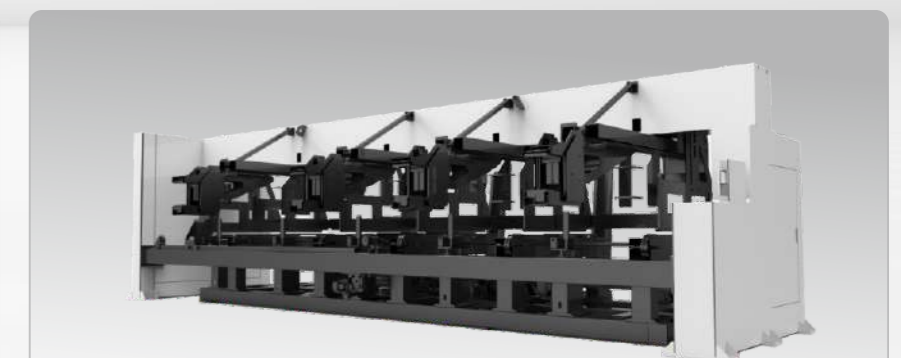
Welding detect



Automatic deslagging



Full servo dynamic support
Perfect fit all kinds of pipes



Intelligent auto loader
2.5T $\varnothing 20-200\text{mm}$ $600*600*6200\text{mm}$